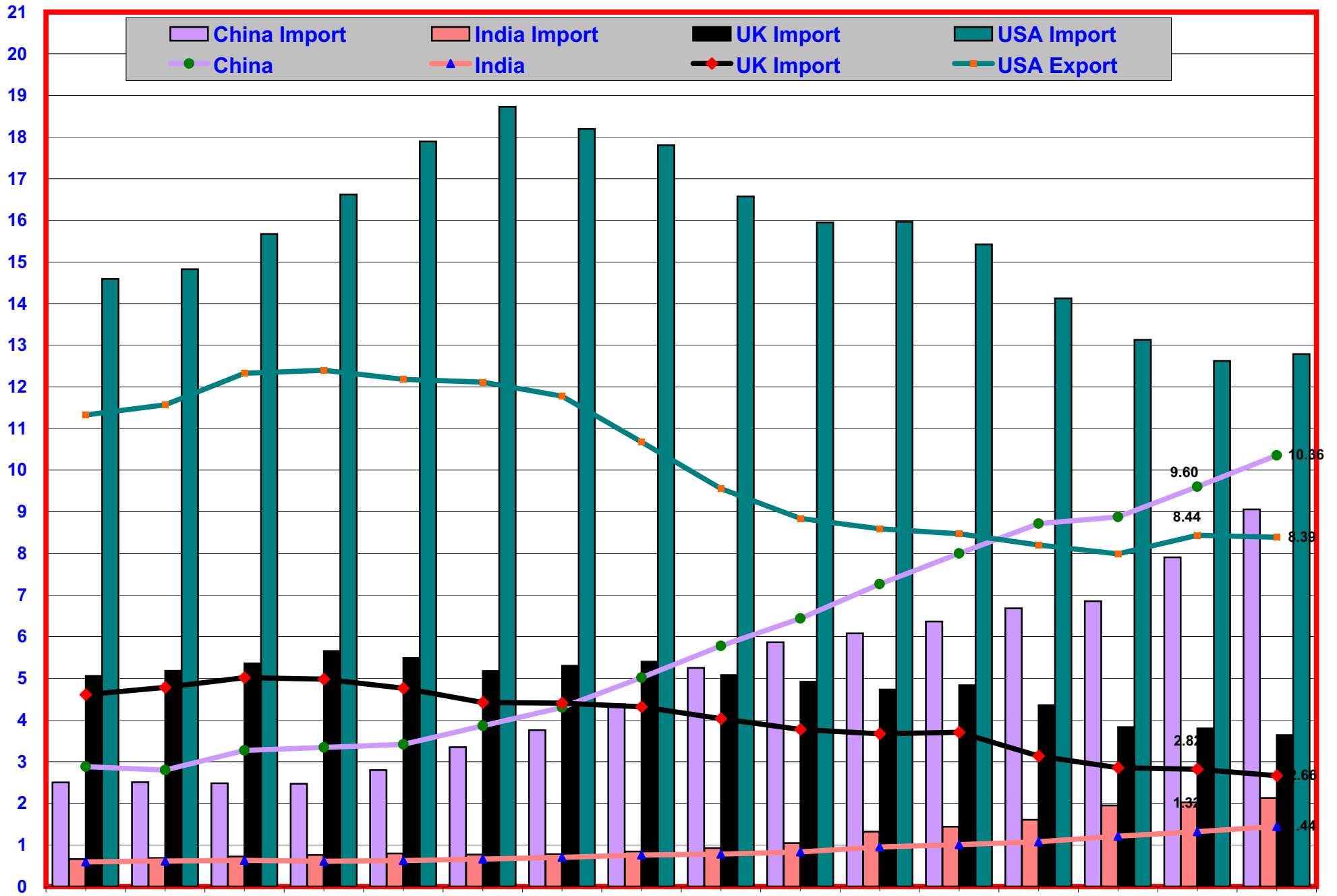


Percentage Share in World Trade - Export and Import



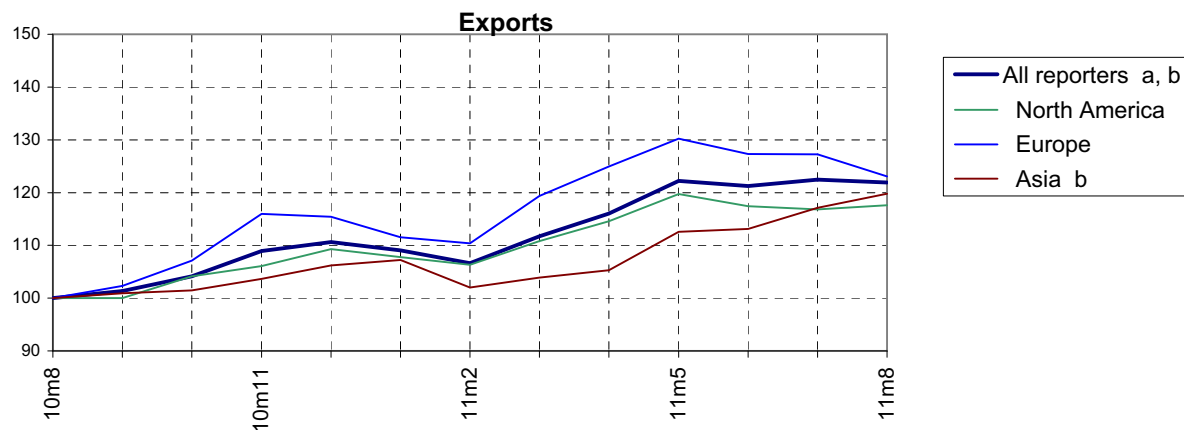
Summary of monthly merchandise trade developments

(percentage change compared with same month of previous year (yoy))

	Exports			Imports		
	2011m7	2011m8	2011m9	2011m7	2011m8	2011m9
All reporters a, b	20	25	...	19	25	...
<i>of which</i>						
North America	18	19	...	15	15	...
United States	16	19	...	14	15	...
Europe	19	29	...	19	26	...
EU (27)	18	28	...	18	26	...
EU (27) intra-trade	19	29	...	19	29	...
EU (27) extra-trade	16	27	...	17	23	...
Asia b	21	21	...	22	28	...
China	20	24	17	24	30	21
India	82	44	...	52	42	...
Japan	7	14	13	21	32	23
NICs (6) c	20	19	...	15	25	...
Other economies						
Brazil	26	36	24	16	31	13
Russian Federation	36	40	...	31	26	...
South Africa	13	32	...	24	26	...
Israel	15	19	13	37	20	33

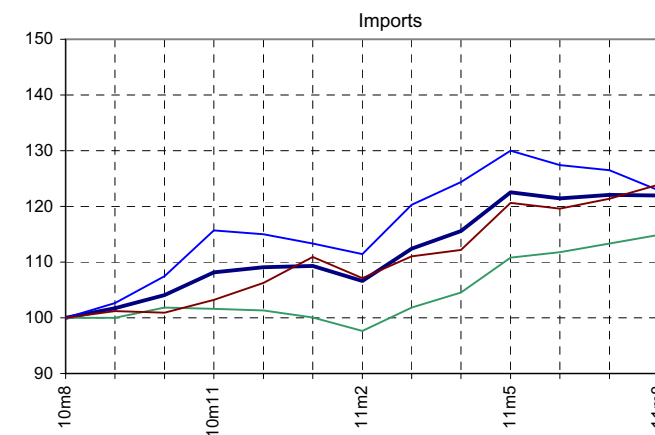
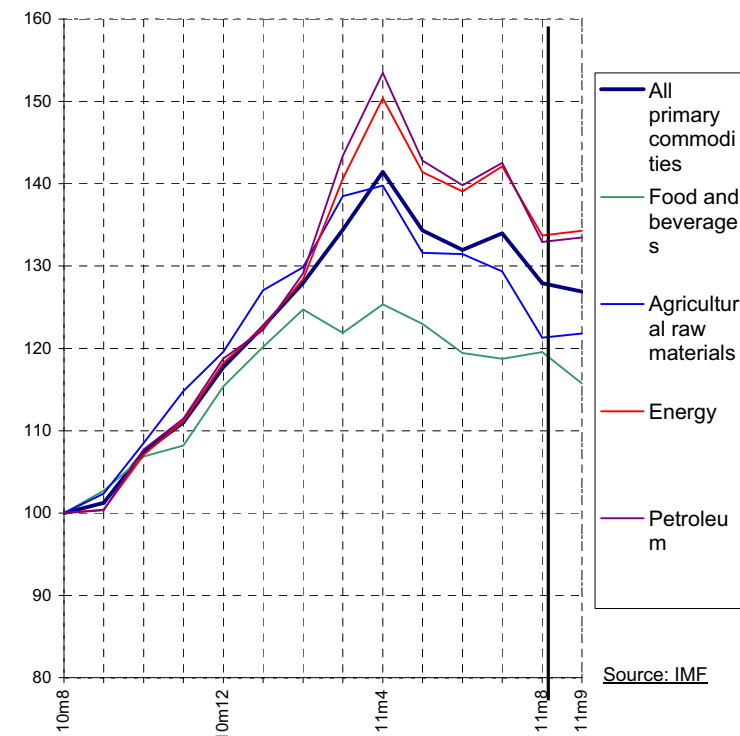
Regional merchandise trade developments during the last twelve months

(Indices, 3-month moving average, 2010m8=100)



Commodity price developments since 2010m8

(Indices, 2010m8=100)



a Cover over 90 per cent of world trade. This aggregate excludes trade of fuel and commodity exporters in Africa and the Middle East, due to lack of data.

b Include significant re-exports or imports for re-exports.

c Hong Kong, China (excluding re-export trade), Republic of Korea, Malaysia, Singapore, Taipei, Chinese, and Thailand.

Note: Not seasonally adjusted.

Source: WTO Secretariat.