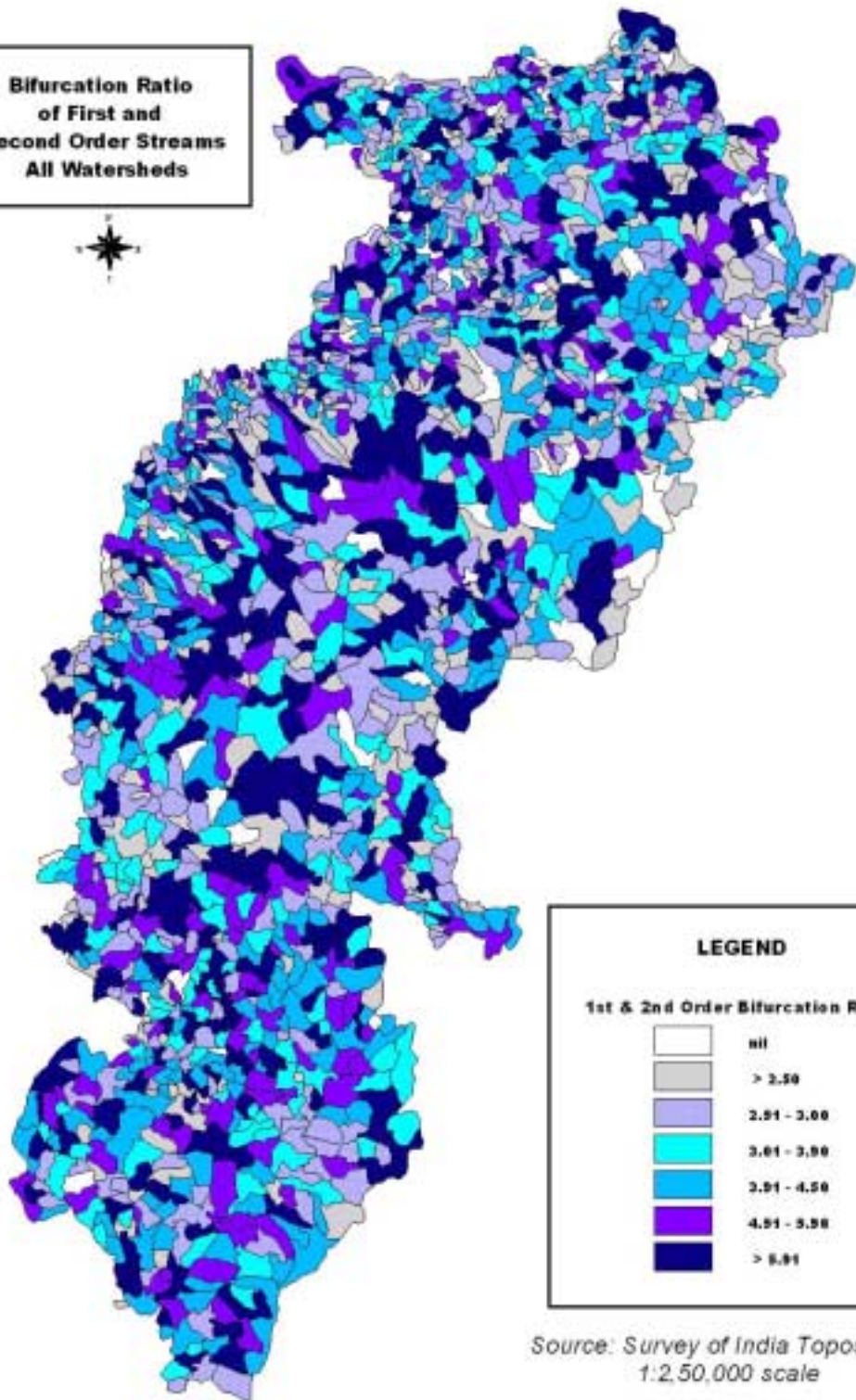


**Bifurcation Ratio
of First and
Second Order Streams
All Watersheds**



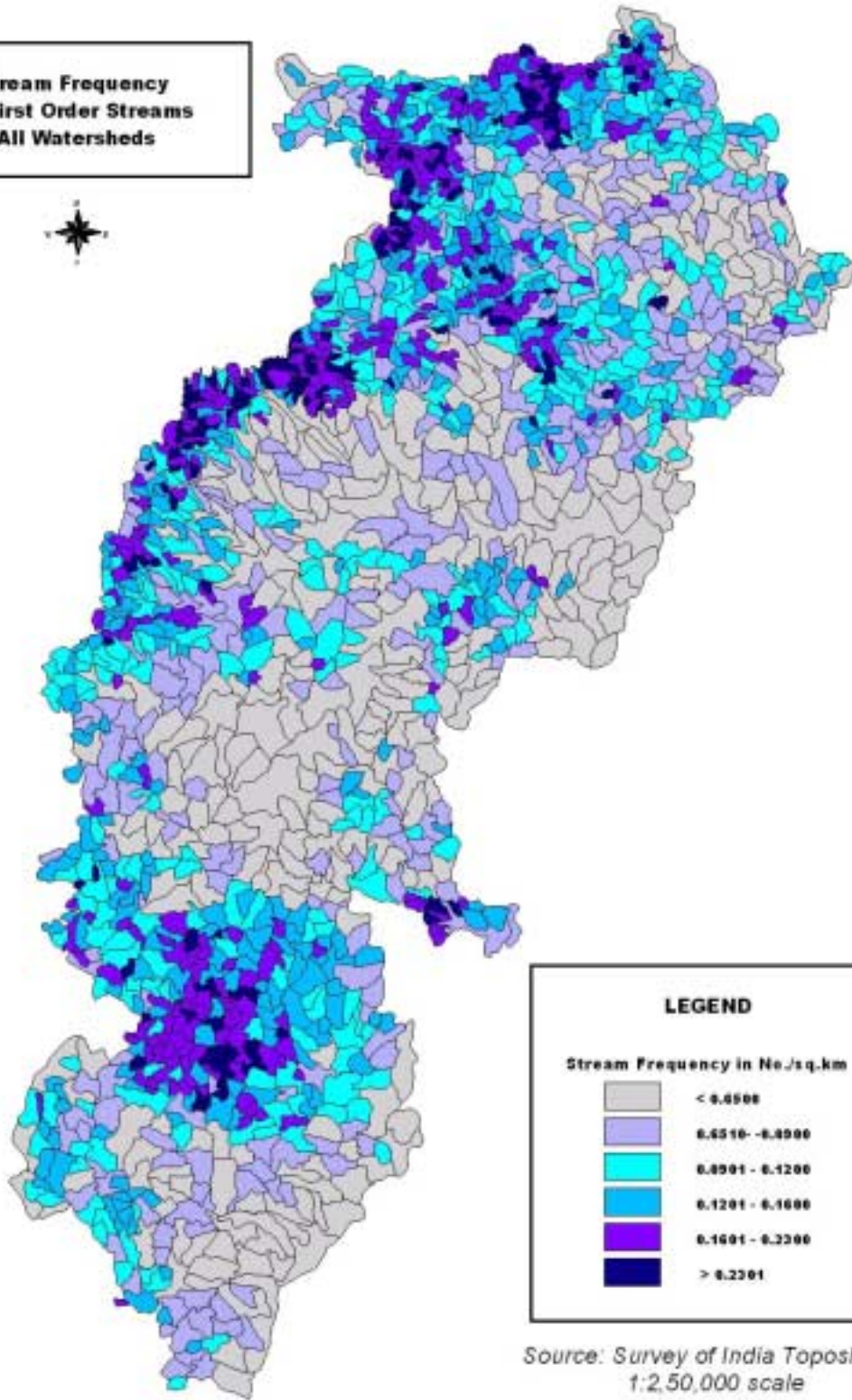
LEGEND

1st & 2nd Order Bifurcation Ratio

White	nil
Light Grey	> 2.50
Light Purple	2.51 - 3.00
Cyan	3.01 - 3.50
Blue	3.51 - 4.50
Dark Purple	4.51 - 5.50
Dark Blue	> 5.51

Source: Survey of India Toposheets
1:2,50,000 scale

**Stream Frequency
of First Order Streams
All Watersheds**



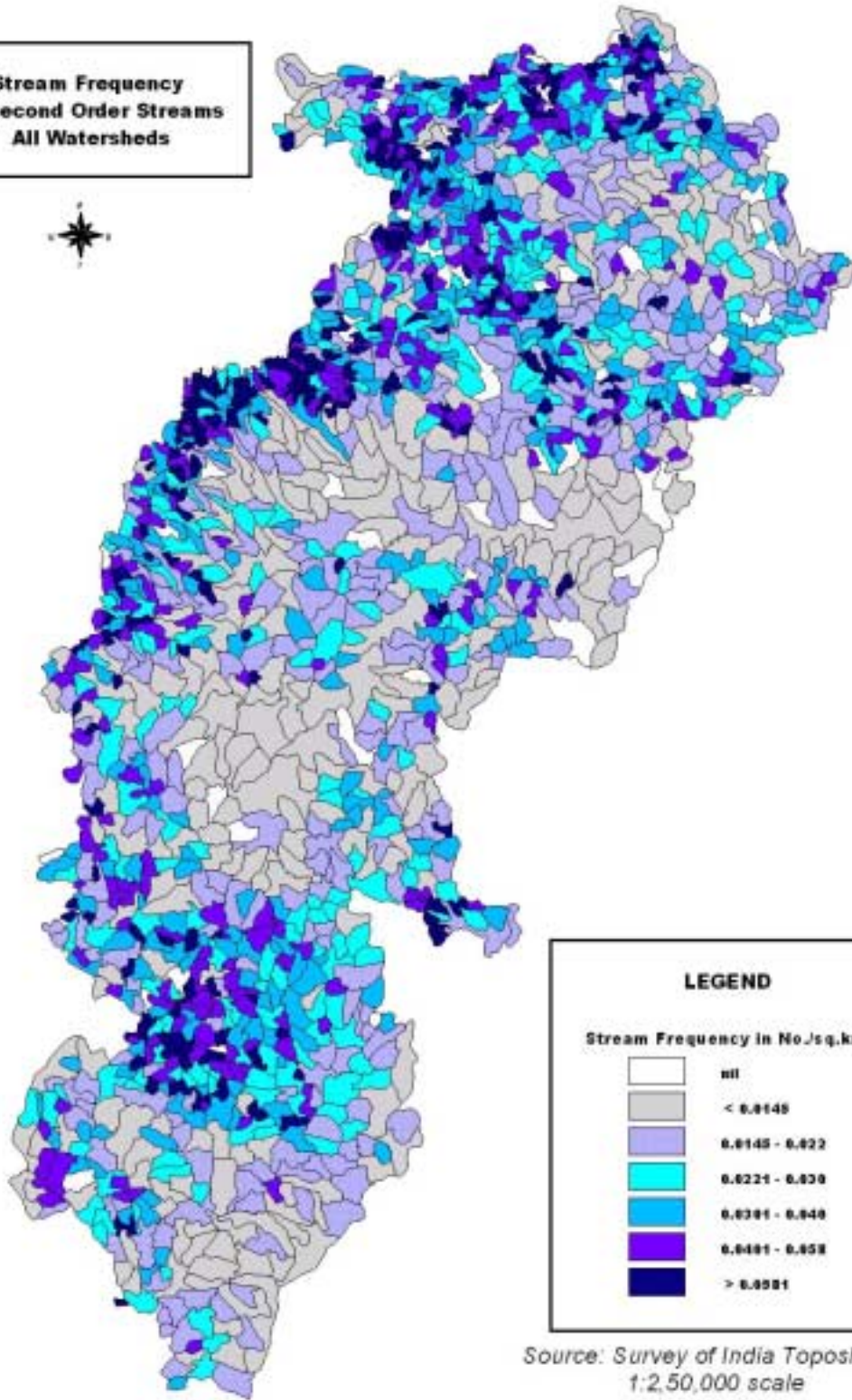
LEGEND

Stream Frequency in No./sq.km

Light Grey	< 0.0500
Light Purple	0.0510 - 0.0900
Cyan	0.0901 - 0.1200
Blue	0.1201 - 0.1600
Purple	0.1601 - 0.2000
Dark Blue	> 0.2001

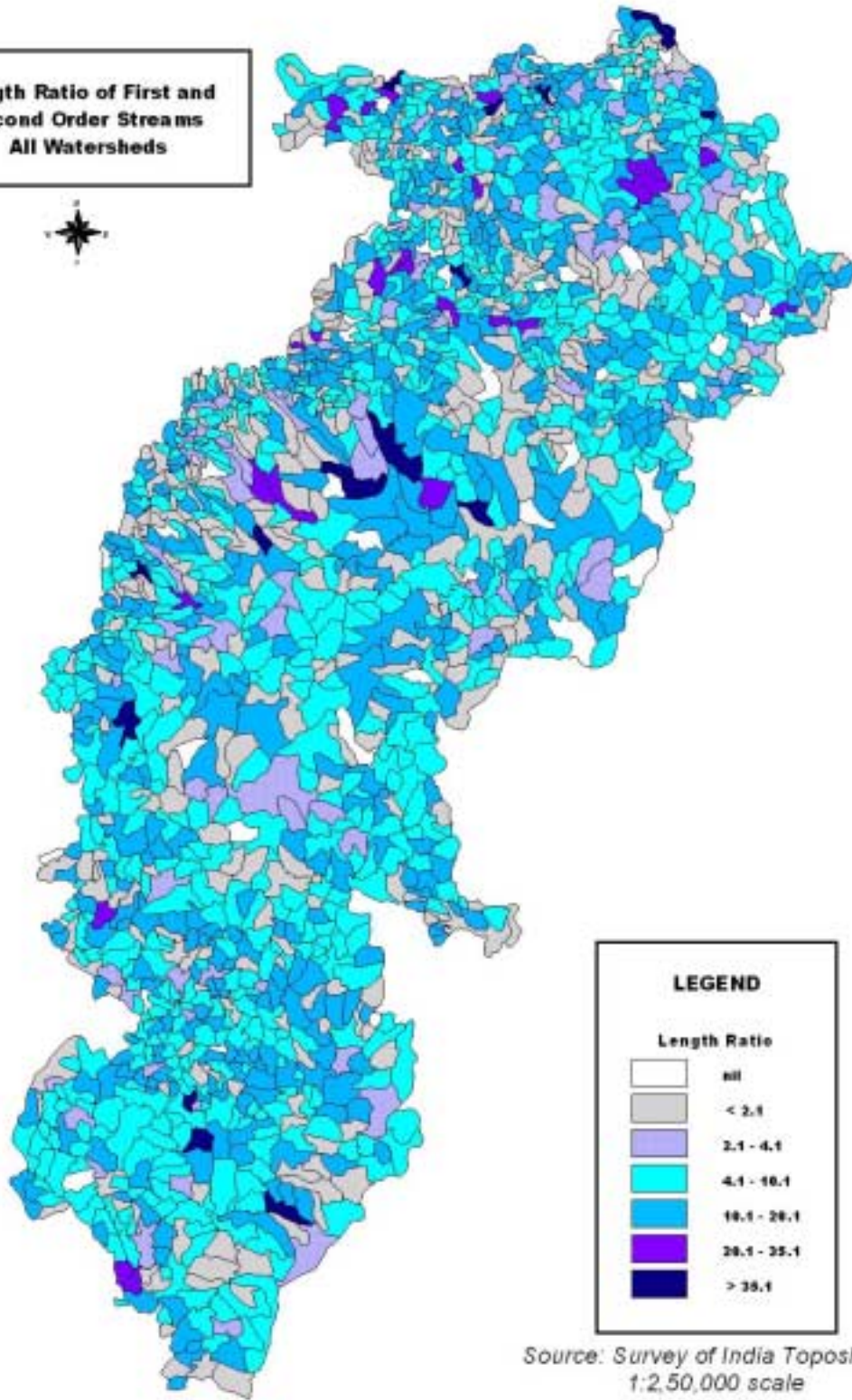
Source: Survey of India Toposheets
1:2,50,000 scale

**Stream Frequency
of Second Order Streams
All Watersheds**



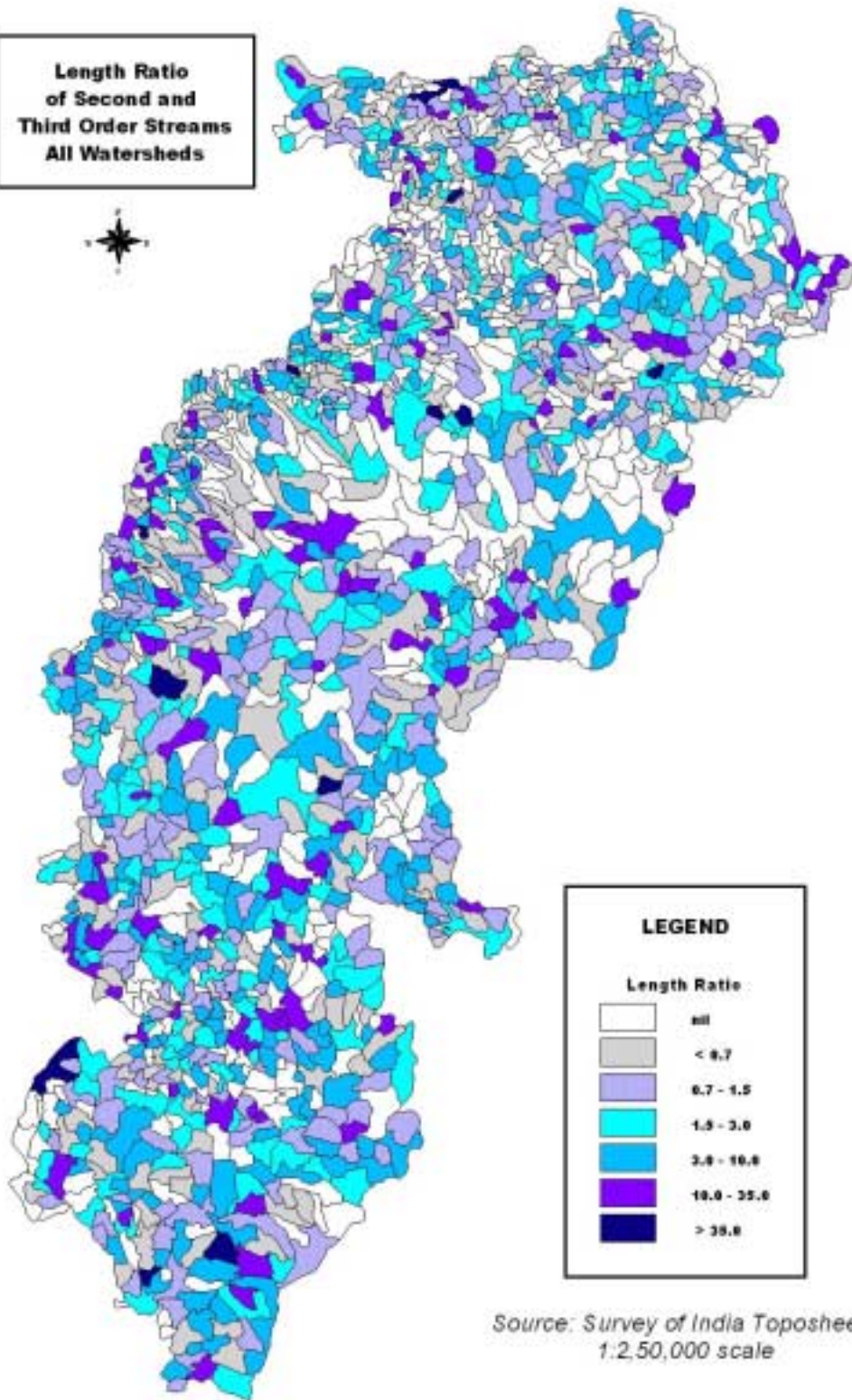
Source: Survey of India Toposheets
1:2,50,000 scale

**Length Ratio of First and
Second Order Streams
All Watersheds**



Source: Survey of India Toposheets
1:2,50,000 scale

**Length Ratio
of Second and
Third Order Streams
All Watersheds**



LEGEND	
Length Ratio	
White	nil
Light Grey	< 0.7
Light Purple	0.7 - 1.5
Cyan	1.5 - 3.0
Blue	3.0 - 10.0
Dark Purple	10.0 - 35.0
Dark Blue	> 35.0

Source: Survey of India Toposheets
1:2,50,000 scale

**Drainage Density
of Watersheds**

