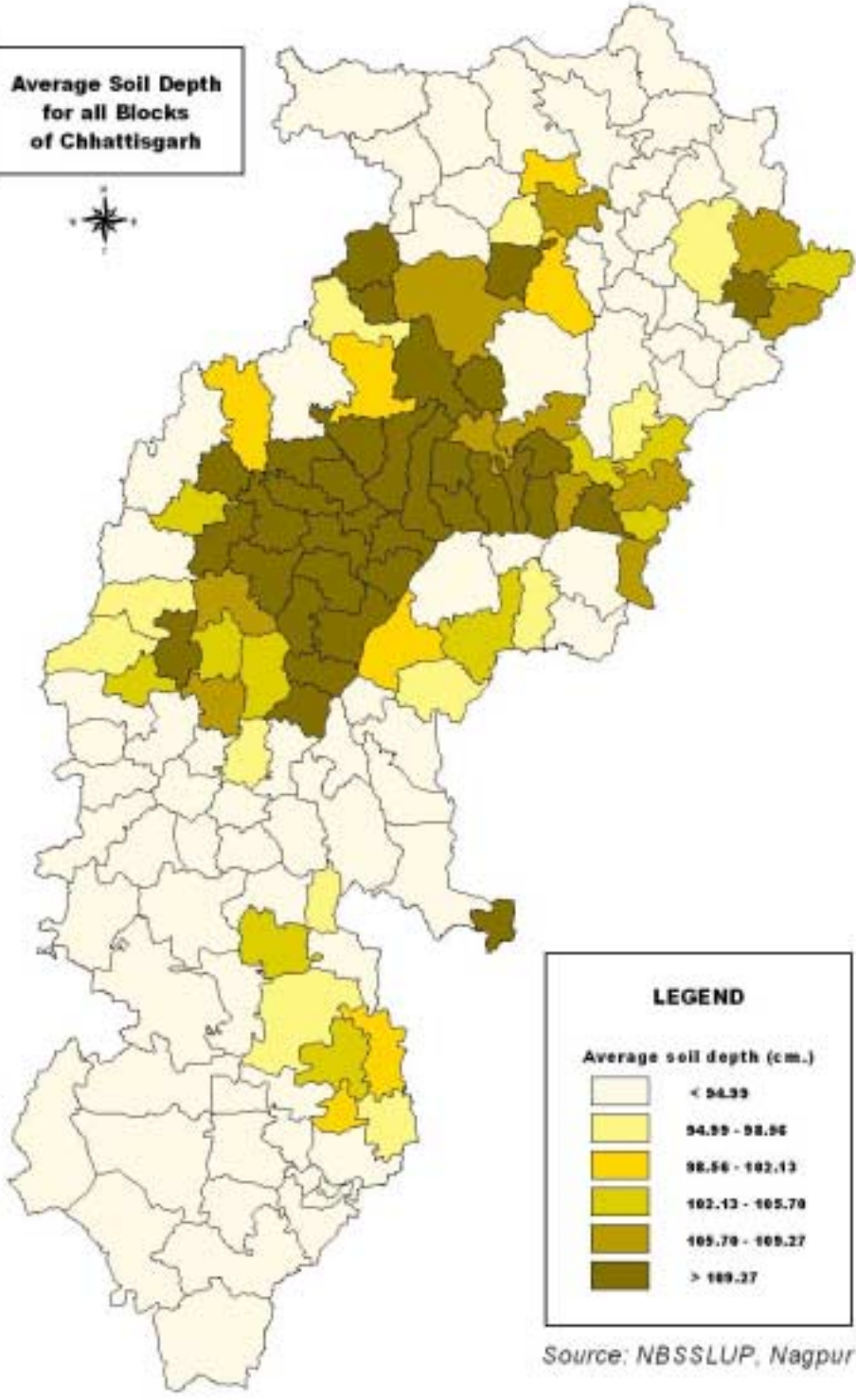
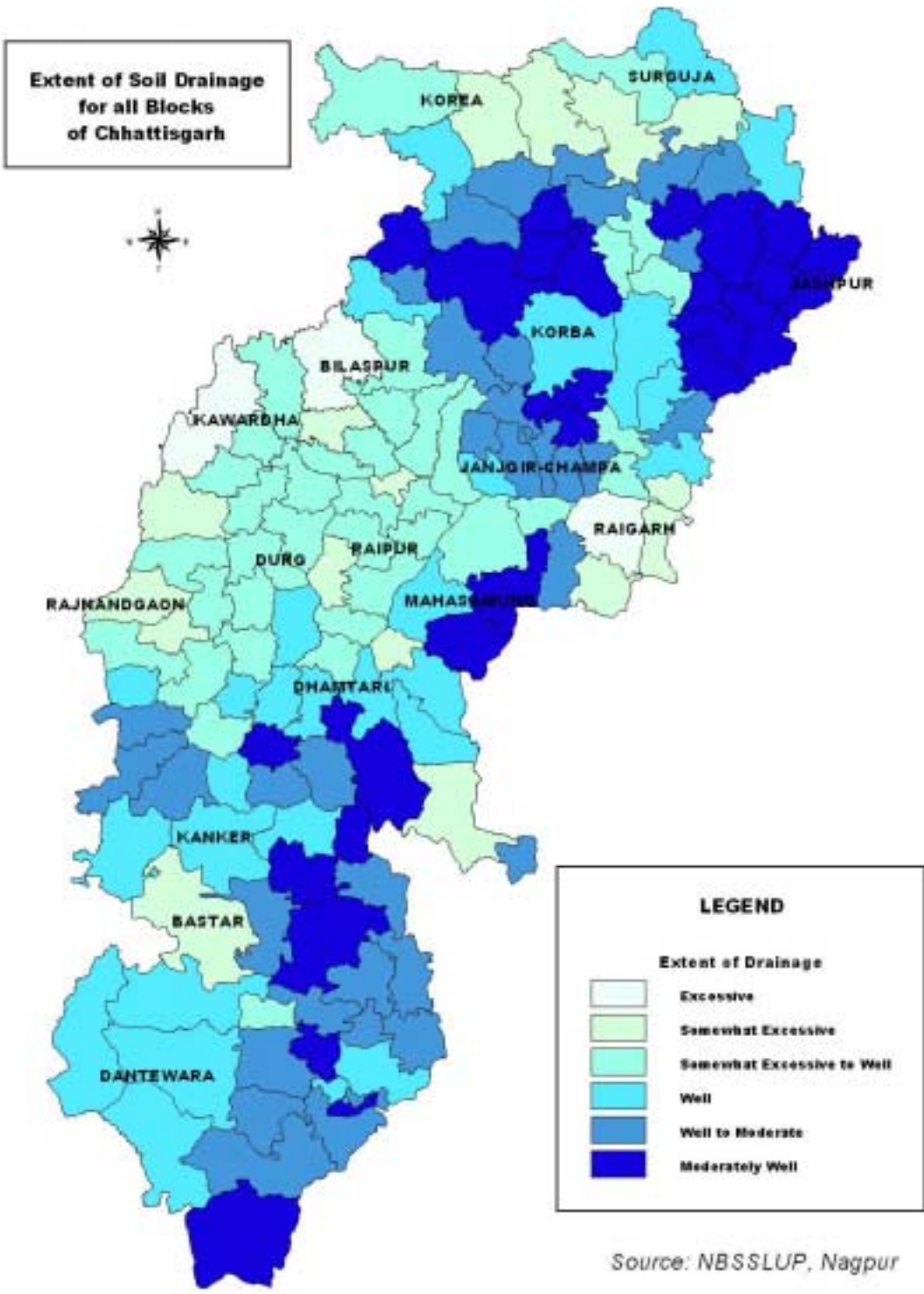


**Average Soil Depth  
for all Blocks  
of Chhattisgarh**

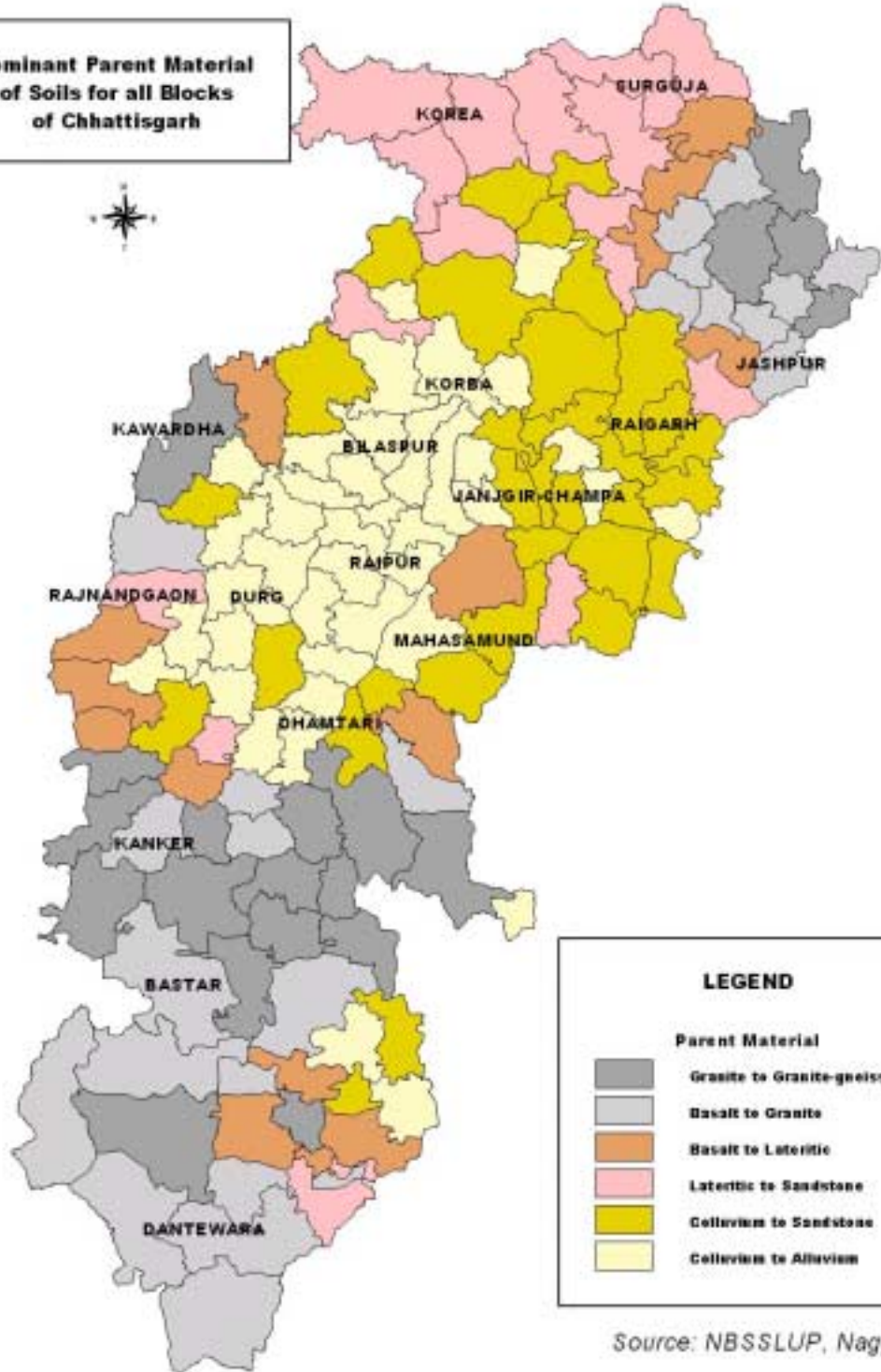


LEGEND	
Average soil depth (cm.)	
	< 94.99
	94.99 - 98.06
	98.06 - 102.13
	102.13 - 105.70
	105.70 - 109.27
	> 109.27

Source: NBSSLUP, Nagpur



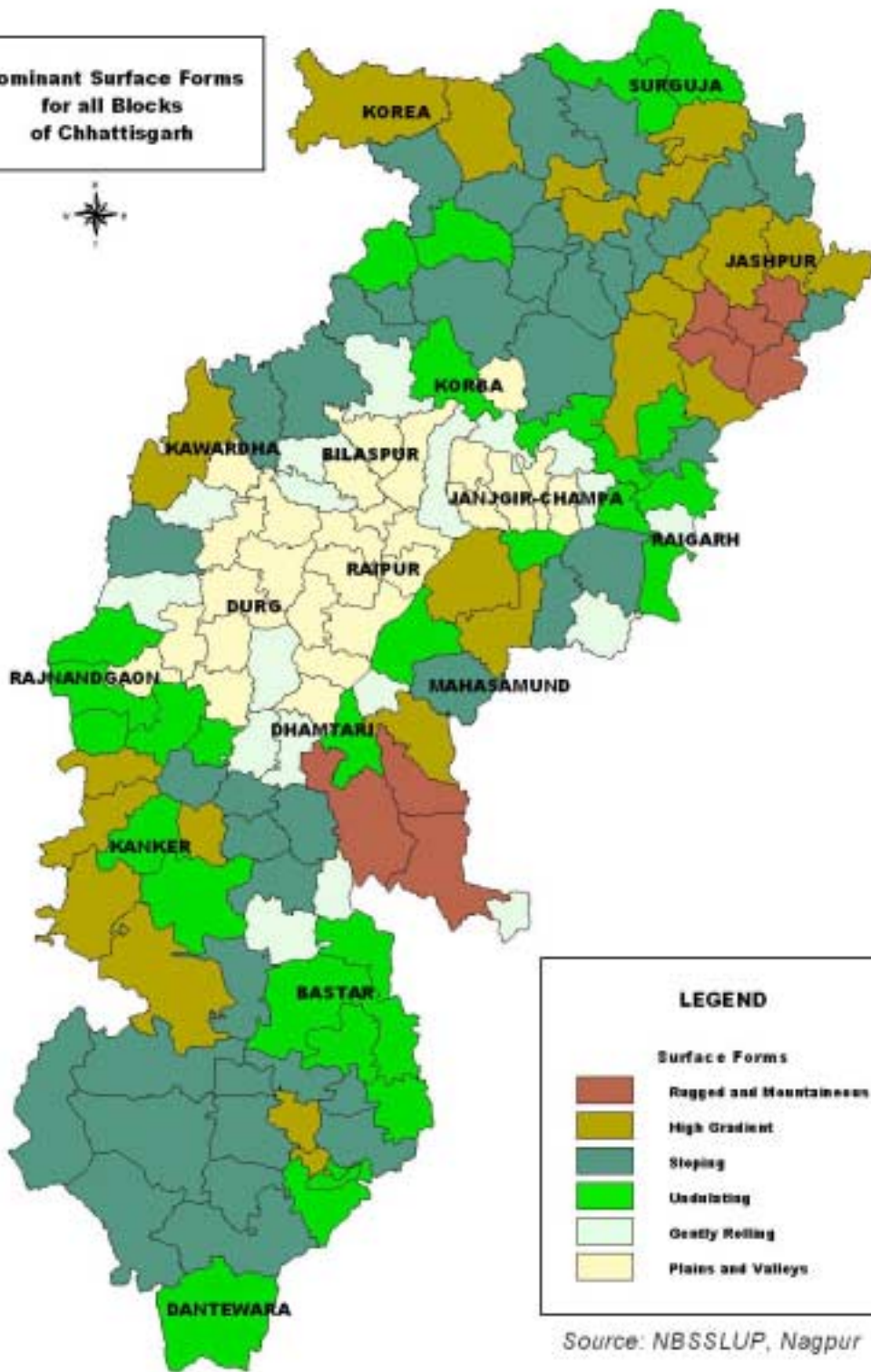
**Dominant Parent Material  
of Soils for all Blocks  
of Chhattisgarh**



LEGEND	
Parent Material	
	Granite to Granite-gneissic
	Basalt to Granite
	Basalt to Lateritic
	Lateritic to Sandstone
	Colluvium to Sandstone
	Colluvium to Alluvium

Source: NBSSLUP, Nagpur

**Dominant Surface Forms  
for all Blocks  
of Chhattisgarh**

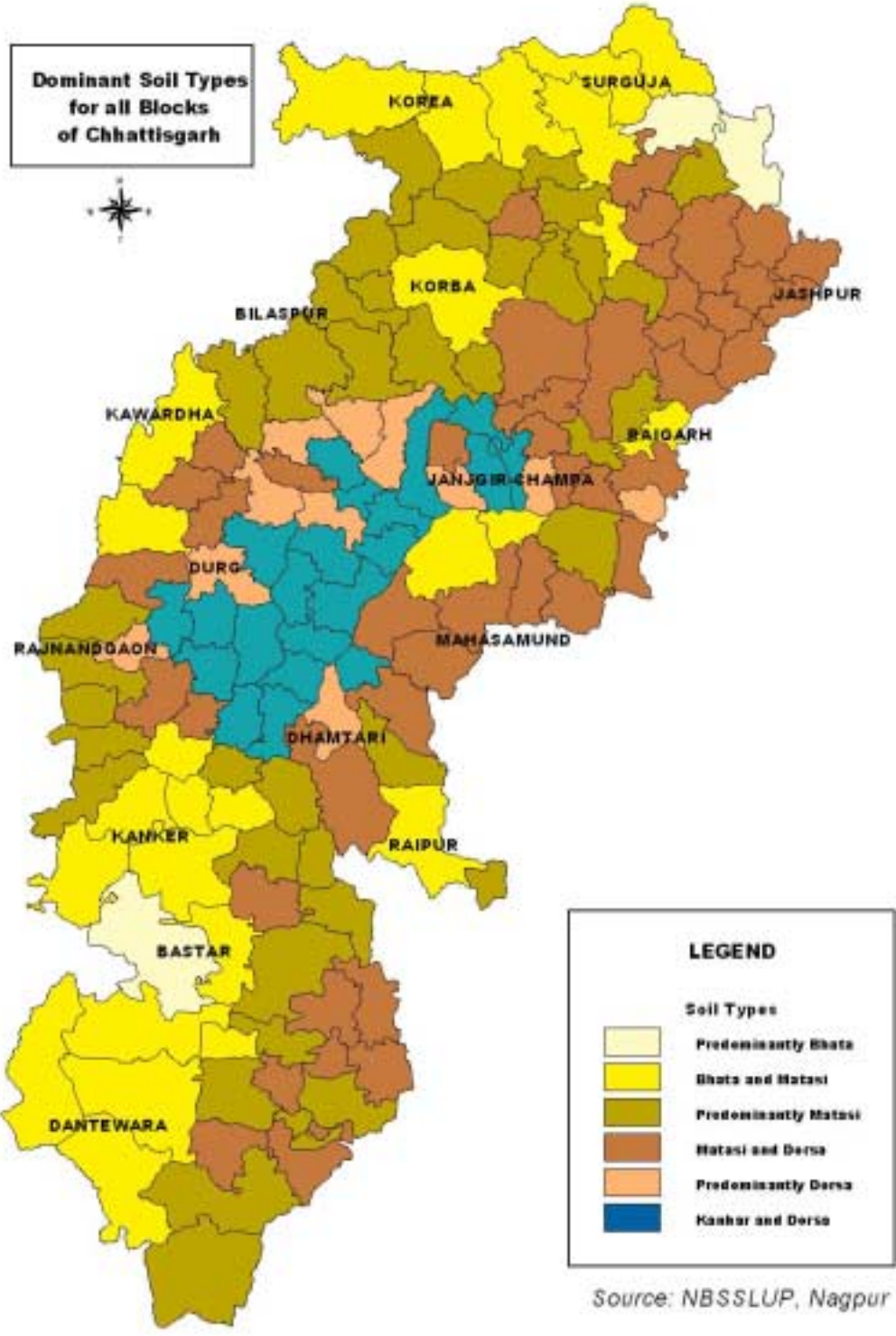


**LEGEND**

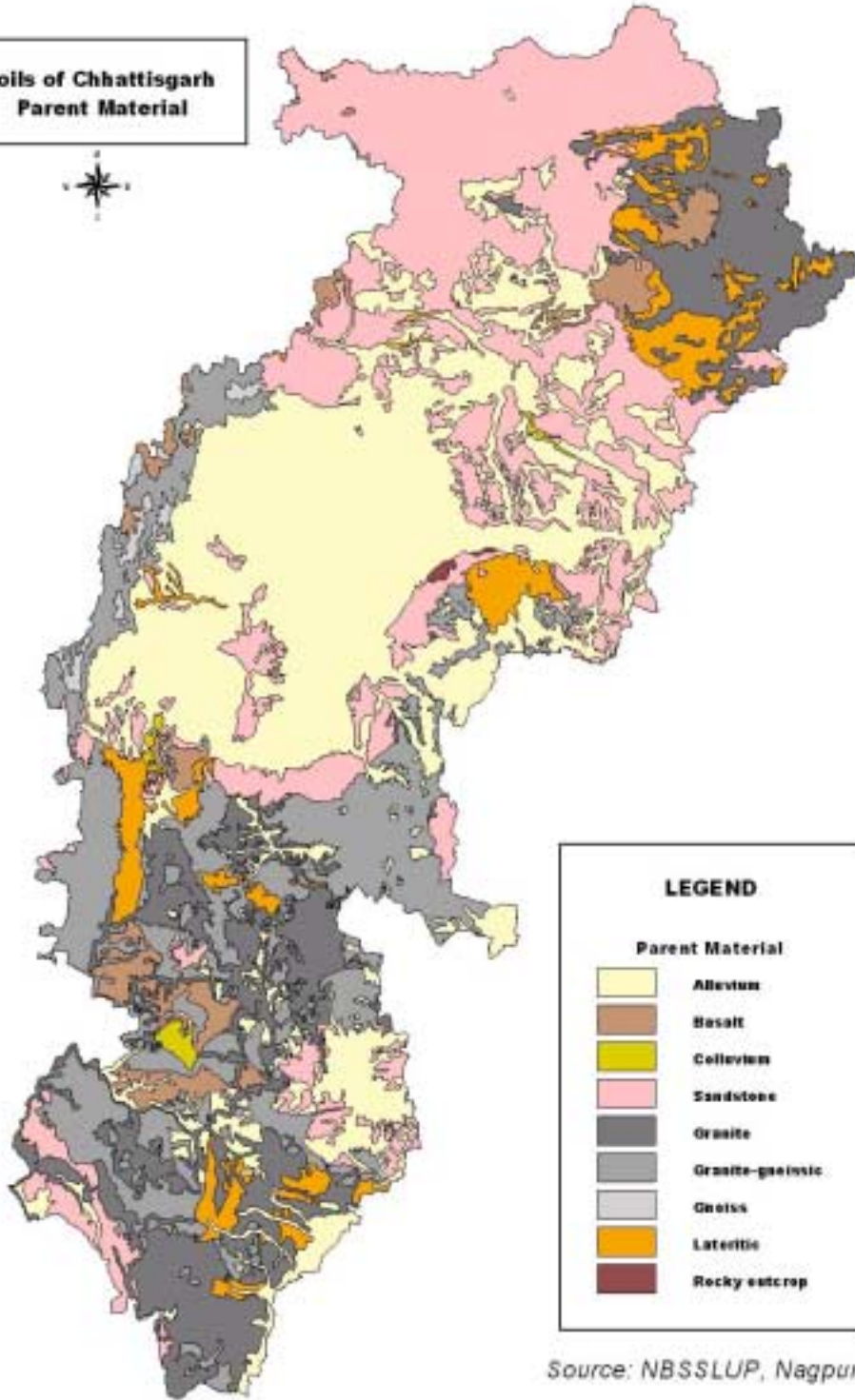
Surface Forms

- Ragged and Mountainous
- High Gradient
- Steping
- Undulating
- Gently Rolling
- Plains and Valleys

Source: NBSSLUP, Nagpur



**Soils of Chhattisgarh  
Parent Material**



Source: NBSSLUP, Nagpur